

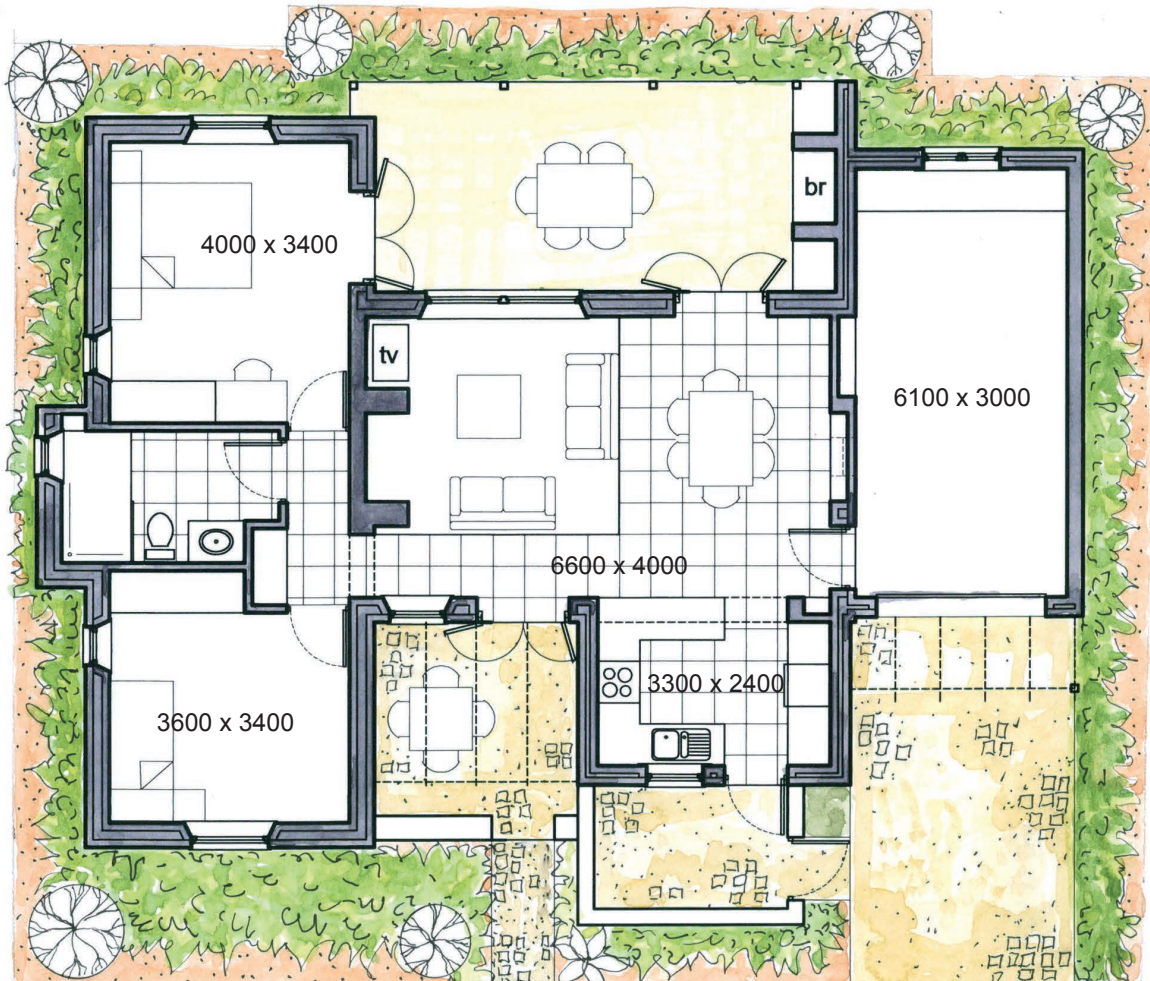
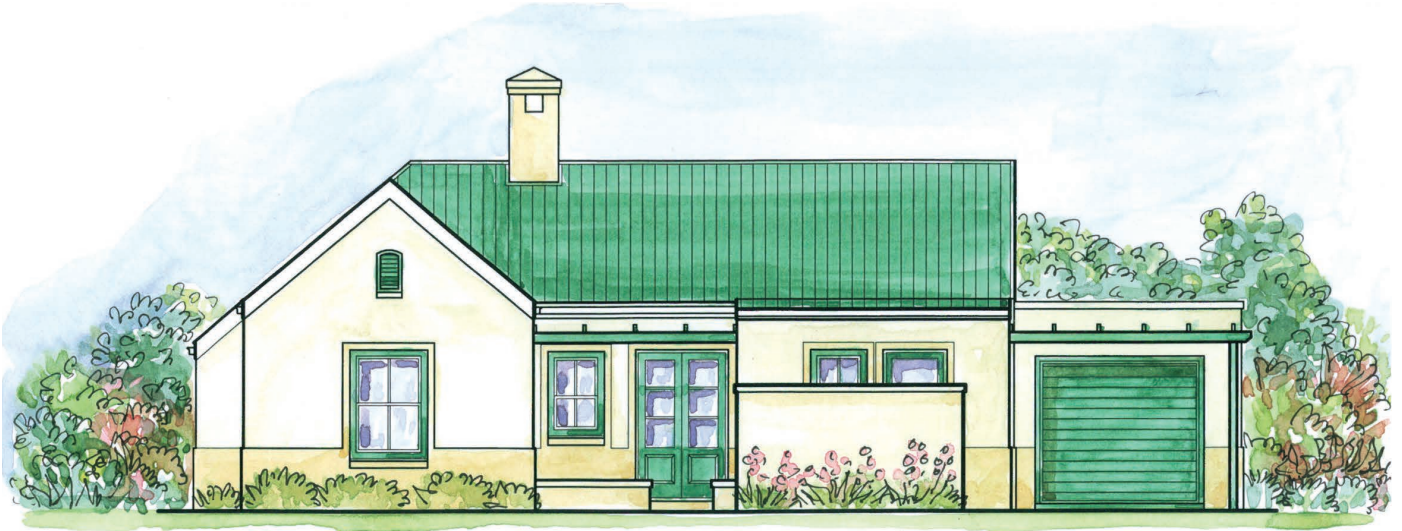
NAPIER RETIREMENT VILLAGE

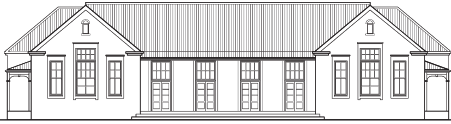
UNIT TYPE A: 2 Bedrooms

House	85m ²
Garage	22m ²
Covered Terrace	20m ²

TOTAL AREA 127m²

Entrance Courtyard	9m ²
Utility Yard	6m ²





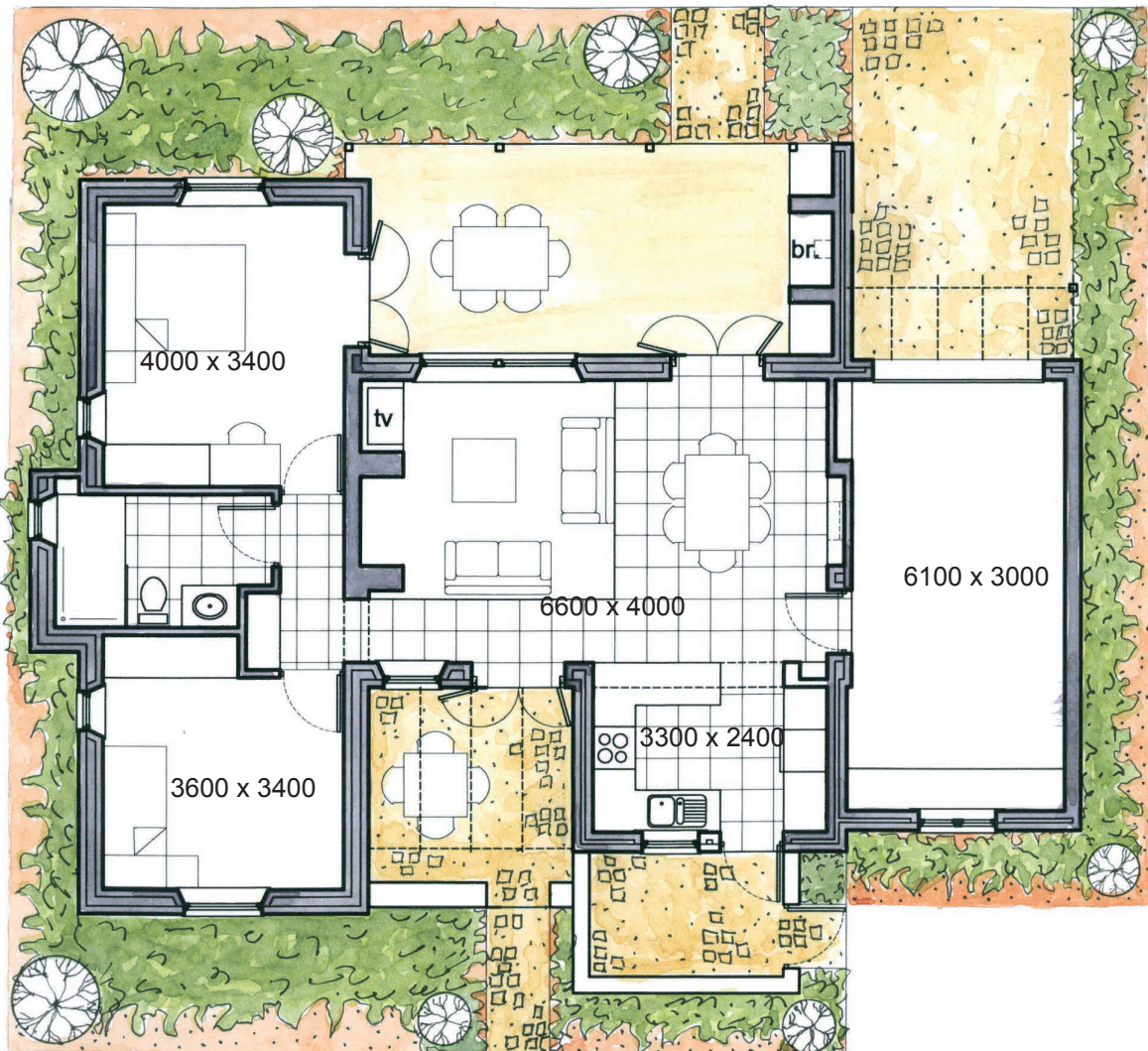
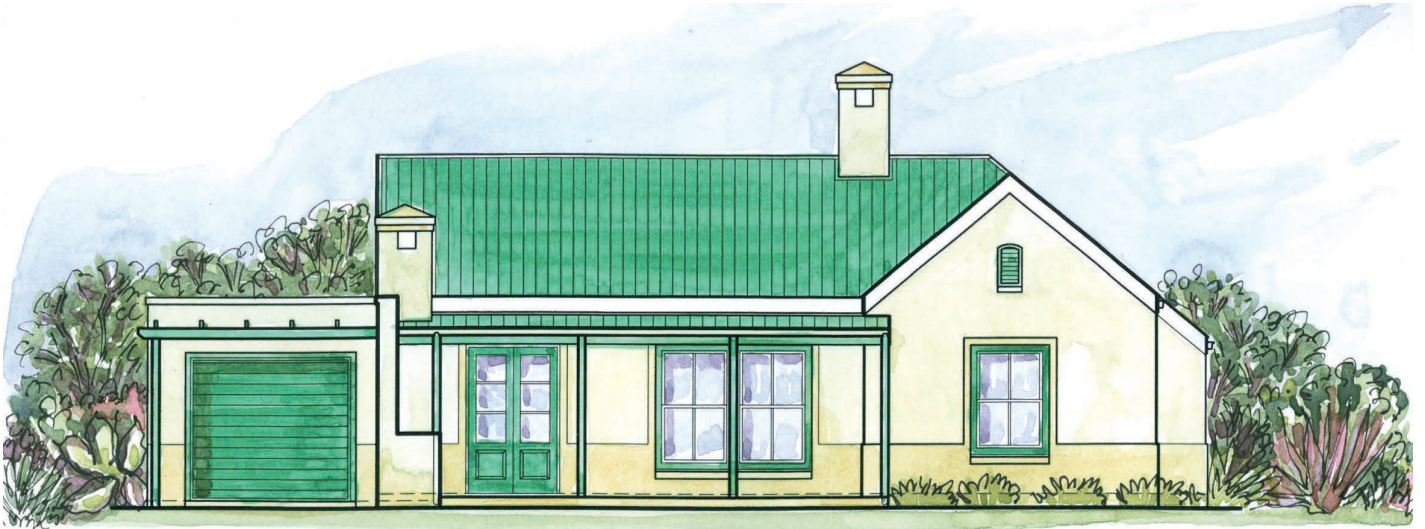
NAPIER RETIREMENT VILLAGE

UNIT TYPE B: 2 Bedrooms

House	85m ²
Garage	22m ²
Covered Terrace	20m ²

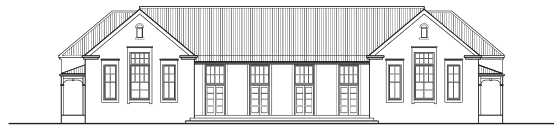
TOTAL AREA **127m²**

Entrance Courtyard	9m ²
Utility Yard	6m ²





3D VIEWS



NAPIER RETIREMENT VILLAGE

